



NIKE TEAM SPORTS 2013/2014

BASEBALL



**JUST
DO
IT.** 
NIKETEAM.COM



BASEBALL

- 2 STOCK
- 10 DIGITAL
- 15 CUSTOM
- 20 CUSTOM ELITE
- 23 FOOTWEAR
- 24 EQUIPMENT & ACCESSORIES



519558

FULL-BUTTON VAPOR JERSEY

\$45.00

SIZES: XS, S, M, L, XL, 2XL, 3XL

OFFER DATE: 12/01/12
END DATE: 04/01/15

Double-knit full-button jersey with optimized tapered fit. Nike Team Sports jock tag at lower left hem and Swoosh design trademark at upper left chest. Body width: 22", Body length: 32.5" (size large).

Part of Stock Embellishment Program.

FABRIC: 100% polyester.

010 Black/(White)	052 Blue Grey/(Black)	100 White/(Black)
341 Dark Green/(White)	419 Navy/(White)	493 Royal/(White)
610 Cardinal/(White)	657 Scarlet/(White)	



453351

STOCK ELITE HENLEY

\$45.00

SIZES: S, M, L, XL, 2XL, 3XL

OFFER DATE: 12/01/11
END DATE: 04/01/14

Dri-FIT single knit piqué short sleeve game jersey. Two button front placket. Embroidered Swoosh design trademark on left sleeve. Body width: 24", Body length: 34" (size large).

Part of Stock Embellishment Program.

FABRIC: 100% polyester.

010 Black/(White)	052 Blue Grey/(Black)	100 White/(Black)
341 Dark Green/(White)	419 Navy/(White)	493 Royal/(White)
610 Cardinal/(White)	657 Scarlet/(White)	

Youth #453370 / S-XL / \$40.00 / Body width: 18", Body length: 25" (size medium)

DRI-FIT



578552 | BP JERSEY II

\$40.00

SIZES: S, M, L, XL, 2XL, 3XL

OFFER DATE: 12/01/13
END DATE: 04/01/16

Lightweight mesh two-button BP top with mesh at arm seams for breathability. Mock raglan sleeve construction for ease of movement. Body width: 22", Body length: 32.75" (size large).

Part of Stock Embellishment Program.

FABRIC: 100% polyester.

010 Black/Black/(White)	052 Blue Grey/Blue Grey/(Black)	053 Blue Grey/Scarlet/(Scarlet)
056 Blue Grey/Navy/(Navy)	058 Blue Grey/Black/(Black)	100 White/White/(Black)
348 Dark Green/Blue Grey/(White)	430 Navy/Blue Grey/(White)	442 Royal/Blue Grey/(White)
616 Cardinal/Blue Grey/(White)	631 Scarlet/Blue Grey/(White)	

Youth #578553-010, 052, 100, 430, 442, 631 / S-XL / \$35.00 / Body width: 18", Body length: 24" (size medium)

NEW

Y

DRI-FIT



519556 | DRI-FIT GAME TOP

\$35.00

SIZES: S, M, L, XL, 2XL, 3XL

OFFER DATE: 12/01/12
END DATE: 04/01/15

Lightweight, performance game top is a sleek alternative to the traditional bulky full-button jersey. Embroidered Swoosh design trademark at neck with contrast stitch at shoulders. Body width: 22.75", Body length: 31.5" (size large).

Part of Stock Embellishment Program.

Part of Response Program.

FABRIC: Body: 100% polyester.

025	Black/Blue Grey/(White)	052	Blue Grey/Blue Grey/(Black)	118	White/Blue Grey/(Black)
348	Dark Green/Blue Grey/(White)	430	Navy/Blue Grey/(White)	442	Royal/Blue Grey/(White)
544	Purple/Blue Grey/(White)	616	Cardinal/Blue Grey/(White)	631	Scarlet/Blue Grey/(White)
668	Dark Maroon/Blue Grey/(White)				

Youth #519557 / XS-XL / \$30.00 / Body width: 17.5", Body length: 23.5" (size medium)

DRI-FIT 

519562 | VAPOR PANT UNHEMMED

\$55.00

SIZES: S, M, L, XL, 2XL, 3XL

OFFER DATE: 12/01/12
END DATE: 04/01/15

Poly warp knit baseball pant with reinforced knees and back thigh for durability, brass zipper, back pockets, and two metal snap closures. Gripper elastic waistband and a relaxed leg fit. Side seams moved forward to minimize effect on sliding. Embroidered Swoosh design trademark. Hip width: 22", Inseam length: 37" (size large).

FABRIC: 100% polyester.

052	Blue Grey/Blue Grey/(Black)	053	Blue Grey/Scarlet/(Scarlet)	055	Blue Grey/Royal/(Royal)
056	Blue Grey/Navy/(Navy)	058	Blue Grey/Black/(Black)	100	White/White/(Black)
106	White/Black/(Black)	107	White/Navy/(Navy)	108	White/Royal/(Royal)
109	White/Scarlet/(Scarlet)				

578535 | LIGHTS OUT PANT II PIPED

\$45.00

SIZES: S, M, L, XL, 2XL, 3XL

OFFER DATE: 12/01/13
END DATE: 04/01/16

Moisture-wicking Dri-FIT polyester warp knit baseball pant with reinforced knees for durability, brass zipper, two metal snap closures, two back welt pockets, and a pro-style seven belt loop system. Gripper silicone print on interior waistband for jersey lock-down with jacquard "NIKE BASEBALL" graphic repeat. Hip width: 22", Inseam length: 31.75" (size large).

FABRIC: 100% polyester.

053	Blue Grey/Scarlet/(Scarlet)	055	Blue Grey/Royal/(Royal)	056	Blue Grey/Navy/(Navy)
058	Blue Grey/Black/(Black)	106	White/Black/(Black)	107	White/Navy/(Navy)
108	White/Royal/(Royal)	109	White/Scarlet/(Scarlet)		

Youth #578539 / XS-XL / \$40.00 / Hip width: 15.75", Inseam length: 25.75" (size medium)

 DRI-FIT 

578534 | LIGHTS OUT PANT II

\$40.00

SIZES: S, M, L, XL, 2XL, 3XL

OFFER DATE: 12/01/13
END DATE: 04/01/16

Moisture-wicking Dri-FIT polyester warp knit baseball pant with reinforced knees for durability, brass zipper, two metal snap closures, two back welt pockets, and a pro-style seven belt loop system. Gripper silicone print on interior waistband for jersey lock-down with jacquard "NIKE BASEBALL" graphic repeat. Hip width: 22", Inseam length: 31.75" (size large).

FABRIC: 100% polyester.

052	Blue Grey/(Black)	100	White/(Black)
-----	-------------------	-----	---------------

Youth #578538 / XS-XL / \$35.00 / Hip width: 15.75", Inseam length: 25.75" (size medium)

 DRI-FIT 



548975

NPC 5 TOOL PLAYER TOP

\$70.00

SIZES: S, M, L, XL, 2XL

OFFER DATE: 12/01/12
END DATE: 04/01/14

The ultimate in baseball underlayer, this Dri-FIT top has compression fit shoulders and sleeves with seamless construction to keep the throwing muscles warm and stable after constant or periodic use during play. Body is fitted for non-restrictive comfortable feel and includes seamless ventilation pods. Shoulders constructed with flat seams to reduce chafing. Swoosh design trademark, MLB logos, and Dri-FIT logo in heat transfers. Body width: 20.25", Body length: 27.75" (size large).

FABRIC: 88% nylon/12% spandex.

064 Flint Grey/Black/(White)	065 Flint Grey/College Navy/(White)	066 Flint Grey/Varsity Royal/(White)
067 Flint Grey/Varsity Red/(White)		

DRI-FIT



519559

THERMALITE LONG-SLEEVE TOP

\$55.00

SIZES: XS, S, M, L, XL, 2XL, 3XL

OFFER DATE: 12/01/12
END DATE: 04/01/14

Dri-FIT, fitted performance top has a soft, cotton hand feel. Screen printed Swoosh design trademark. Body is slightly longer to help prevent garment from coming un-tucked during play. Body width: 20.5", Body length: 30.25" (size large).

FABRIC: 100% polyester.

010 Black/(White)	060 Anthracite/(White)	419 Navy/(White)
493 Royal/(White)	657 Scarlet/(White)	

DRI-FIT



519550

NPC HYPERCOOL SHORT-SLEEVE

\$50.00

SIZES: S, M, L, XL, 2XL, 3XL

OFFER DATE: 12/01/12
END DATE: 01/01/15

Performance, Dri-FIT top keeps you cool with engineered stretch fabric on body and open hole mesh panels on back panel and under arms. Mesh panels on back are bonded to reduce bulk. Fitted for more comfortable fit. Flat seam construction with strategic placement to enhance comfort when wearing under jersey. Swoosh design trademark heat transfer at neck. Body width: 20", Body length: 28.25" (size large).

FABRIC: 84% polyester/16% elastane.

010 Black/Flint Grey/(White)	100 White/Flint Grey/(Flint Grey)	419 College Navy/Flint Grey/(White)
493 Game Royal/Flint Grey/(White)	657 University Red/Flint Grey/(White)	

DRI-FIT



456174

FITTED NPC CORE RAGLAN LONG-SLEEVE

\$40.00

SIZES: XS, S, M, L, XL, 2XL, 3XL

OFFER DATE: 12/01/11
END DATE: 01/01/16

Fitted design for comfort in a variety of training conditions. Strategically-placed, flat-seam construction helps reduce irritation caused by chafing. Raglan long-sleeves for great range of motion and enhanced comfort. Swoosh design trademark heat transfer at center neck rib. Nike Pro Combat printed on the inside back neckband. Jock tag heat transfer at the front-left hem for quick and easy product identification. Body width: 20.5", Body length: 27.75" (size large).

FABRIC: 84% polyester/16% spandex.

010 Black/(White)	100 White/(Flint Grey)	341 Gorge Green/(White)
419 College Navy/(White)	493 Game Royal/(White)	657 University Red/(White)

DRI-FIT



456173

FITTED NPC CORE RAGLAN SHORT-SLEEVE

\$35.00

SIZES: XS, S, M, L, XL, 2XL, 3XL

OFFER DATE: 12/01/11
END DATE: 01/01/16

Fitted design for comfort in a variety of training conditions. Strategically-placed, flat-seam construction helps reduce irritation caused by chafing. Raglan short-sleeves for great range of motion and enhanced comfort. Swoosh design trademark heat transfer at center neck rib. Nike Pro Combat printed on the inside back neckband. Jock tag heat transfer at the front-left hem for quick and easy product identification. Body width: 20.5", Body length: 27.75" (size large).

FABRIC: 84% polyester/16% spandex.

010 Black/(White)	100 White/(Flint Grey)	341 Gorge Green/(White)
419 College Navy/(White)	493 Game Royal/(White)	657 University Red/(White)

DRI-FIT



539285

NPC HYPERSTRONG DIAMOND THIEF 17" SLIDER

\$60.00

SIZES: S, M, L, XL, 2XL, 3XL, 4XL

OFFER DATE: 12/01/12
END DATE: 04/01/14

Nike Pro Combat compression short with abrasion resistant fabric and anatomic screen print design on outside of legs to reduce friction when sliding. Structured foam cells in strategic placement on knee impact zones to aid in fielding and front-first sliding. Flat-lock seams and mesh lined cup pocket. Hip width: 16.25", Inseam length: 14.5" (size large).

FABRIC: 84% polyester/16% spandex.

100 White/(Cool Grey)

DRI-FIT



541020

NPC HYPERSTRONG HEIST SLIDER 1.2

\$35.00

SIZES: S, M, L, XL, 2XL

OFFER DATE: 12/01/11
END DATE: 04/01/14

Nike pro combat branding on the waistband for an authentic look. Foam padding on the outside of the legs for increased durability and impact protection when sliding. Strategically placed flat-seam construction helps reduce irritation caused by chafing and seam-stacking. Jock tag at the center back waist for quick and easy product identification. Compression fit helps support the muscles and allows the short to layer comfortably under a uniform. Hip width: 16.5", Inseam length: 10.75" (size large).

FABRIC: Body: 100% polyester. Mesh: 90% polyester/10% spandex.

100 White/Matte Silver/(White)

Youth #539881 / S-2XL / \$30.00 / Hip width: 13.5", Inseam length: 5.5"(size medium)

DRI-FIT 



578554

DUGOUT JACKET II

\$85.00

SIZES: XS, S, M, L, XL, 2XL, 3XL

OFFER DATE: 12/01/13
END DATE: 10/01/15

Full-zip dugout jacket in Storm-FIT shell fabric for weather resistance. Therma-FIT brushed fleece liner for warmth in the dugout. Raglan sleeve and underarm seam construction for mobility. Discreet zipper access to liner for clean finish if embroidering left chest. Front pockets with zippers for utility. Adjustable pull toggle inside bottom hem. Body width: 24.5", Body length: 30" (size large).

FABRIC: 100% polyester.

020 Black/Anthracite/(White)	061 Anthracite/Black/(White)	063 Anthracite/Navy/(Navy)
064 Anthracite/Royal/(Royal)	066 Anthracite/Scarlet/(Scarlet)	

NEW

STORM-FIT



578555

SHIELD HOT CORNER JACKET

\$75.00

SIZES: XS, S, M, L, XL, 2XL, 3XL

OFFER DATE: 12/01/13
END DATE: 10/01/15

Long-sleeve hot jacket provides the ultimate in mobility and freedom of movement while protecting against wind and rain. Durable Water Repellant finish on stretch woven body fabric. Raglan seams and underarm panels for increased range of motion. Raised collar with quarter-zip placket for comfort. Front pockets for utility with zippers to keep them discreet during training. Adjustable pull toggle inside bottom hem. Body width: 24.75", Body length: 30" (size large).

FABRIC: 100% polyester.

020 Black/Anthracite/(White)	061 Anthracite/Black/(White)	361 Dark Green/Anthracite/(Anthracite)
418 Navy/Anthracite/(Anthracite)	466 Royal/Anthracite/(Anthracite)	656 Scarlet/Anthracite/(Anthracite)
691 Dk Maroon/Anthracite/(Anthracite)	693 Cardinal/Anthracite/(Anthracite)	

NEW



453354

MEN'S THERMA-FIT KO CREW

\$55.00

SIZES: XS, S, M, L, XL, 2XL, 3XL

OFFER DATE: 12/01/11
END DATE: 12/01/14

Performance fleece pull-over with trim at neck, sleeve and hem. Embroidered Swoosh design trademark on center front chest. Body width: 25.25", Body length: 28.75" (size large).

FABRIC: 100% polyester.

010 Black/(White)	057 Grey/(Black)	341 Dark Green/(White)
419 Navy/(White)	493 Royal/(White)	610 Cardinal/(White)
657 Scarlet/(White)	669 Dark Maroon/(White)	

THERMA-FIT



519853

SHORT-SLEEVE HOT JACKET

\$55.00

SIZES: S, M, L, XL, 2XL, 3XL

OFFER DATE: 12/01/12
END DATE: 10/01/15

Dri-FIT woven short-sleeve jacket. Quarter-zip pullover silhouette featuring a zipped front pocket, contrast color shoulder insets, and Swoosh design trademark on the upper right chest. Body width: 25", Body length: 29.25" (size large).

FABRIC: 100% polyester.

230	Black/Flint Grey/(White)	231	Dark Green/Flint Grey/(White)	232	Navy/Flint Grey/(White)
233	Royal/Flint Grey/(White)	234	Purple/Flint Grey/(White)	236	Scarlet/Flint Grey/(White)
237	Cardinal/Flint Grey/(White)				

DRI-FIT



519563

TRAINING SHORT 4.0

\$36.00

SIZES: S, M, L, XL, 2XL, 3XL

OFFER DATE: 12/01/12
END DATE: 10/01/14

Dri-FIT fabric wicks away sweat to help keep you comfortable and dry. Light weight construction is ideal for training. Repeat "NIKE" on inside of elastic waistband for bold look. Internal drawcord. Side pockets and back pocket for baseball-specific utility. Hip width: 24.75" (size large), Inseam length: 11" (all sizes).

FABRIC: 100% polyester.

012	Black/White/(White)	212	Anthracite/White/(White)	420	Navy/White/(White)
494	Royal/White/(White)	658	Scarlet/White/(White)		

DRI-FIT



STOCK EMBELLISHMENT PROGRAM

FULL BLOCK font only



Embellishment Color Options:



Men's Baseball - 1 or 2 color

STYLE NUMBER	STYLE NAME	CATALOG PAGE #	LETTER HEIGHT	NUMBER HEIGHT FRONT/BACK	PRINT OPTIONS 1" EMBROIDERY OR PRINTED TEAM NAME	
519558	FULL-BUTTON VAPOR JERSEY	2	3"	4"/8"	WILDCATS 10 <small>STRAIGHT ABOVE NUMBER</small>	10 <small>AVAILABLE WITH SPACE FOR NAME</small>
453351	STOCK ELITE HENLEY	2	3"	4"/8"		
453370	STOCK ELITE HENLEY – YOUTH	2	2"	4"/8"		
578552	BP JERSEY II	3	3"	4"/8"		
578553	BP JERSEY II – YOUTH	3	2"	4"/8"		
519556	DRI-FIT GAME TOP	4	3"	4"/8"		
519557	DRI-FIT GAME TOP – YOUTH	4	2"	4"/8"		

One-Color Screenprint – \$30

Two-Color Screenprint – \$40

519551 ELITE VAPOR SUBLIMATED JERSEY

\$90.00*



SIZES: S, M, L, XL, 2XL
*15% upcharge for 3XL

OFFER DATE: 12/01/12
END DATE: 04/01/15

Lighter is better. Jersey vest has minimal bulk with no placket or sleeves. Mesh fabric on back and under arms for breathability with stretch woven fabric on chest for durability. Fully sublimated. Nike Team Sports jock tag on lower left hem. Body width: 22", Body length: 32.5" (size large).

FABRIC: 100% polyester.



Style 453356
HYPERCOOL ELITE PANT

453355 | HYPERCOOL ELITE JERSEY

\$100.00*



SIZES: S, M, L, XL, 2XL
*15% upcharge for 3XL

OFFER DATE: 12/01/11
END DATE: 04/01/14

Fully sublimated full button game jersey. Engineered center back ventilation pod for a unique on field look. Flat back mesh sleeves and under arm for added range of motion. Sublimated Swoosh design trademark on front left chest. Nike team sports jock tag at lower left hem. Body width: 22", Body length: 33.5" (size large).

FABRIC: Body: 100% polyester. Front Panel: 80% polyester/20% spandex.



Style 453356
HYPERCOOL ELITE PANT

519549 | HYPERCOOL ELITE 2-BUTTON JERSEY

\$95.00*



SIZES: S, M, L, XL, 2XL
*15% upcharge for 3XL

OFFER DATE: 12/01/12
END DATE: 04/01/15

Fully sublimated two-button game jersey. Engineered center back ventilation pod for a unique on-field look. Flat back mesh sleeves and under arm for added range of motion. Sublimated Swoosh design trademark at left chest, with Nike Team Sports jock tag sewn at lower left hem. Body width: 22", Body length: 33.5" (size large).

FABRIC: Body: 100% polyester. Front Panel: 80% polyester/20% spandex.



Style 453356
HYPERCOOL ELITE PANT

519972 | MEN'S DQT GAME TOP

\$85.00*



SIZES: XS, S, M, L, XL, 2XL
*15% upcharge for 3XL, 4XL

OFFER DATE: 12/01/12
END DATE: 04/01/15

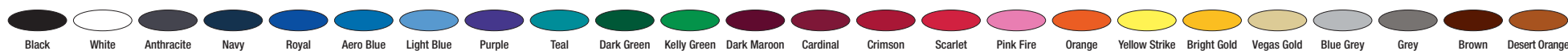
Lightweight, fully sublimated game top is a sleek alternative to the traditional bulky full-button jersey. Swoosh design trademark sublimated at neck. Body width: 22.75", Body length: 31.5" (size large).
FABRIC: 100% polyester.

Youth #519973 / S-XL / \$80.00 / Body width: 17.5", Body length: 23.5" (size medium)



DIGITAL UNIFORM OPTIONS

COLOR OPTIONS



LETTER FONT OPTIONS: Height will vary based on team name.

Full Block – 1 or 2 color – (Also available in Condensed version)

ABCDEFGHIJKLMNOPQRSTUVWXYZ

Athletic Shadow – 2 color only

ABCDEFGHIJKLMNOPQRSTUVWXYZ

Bureau – 1 or 2 color

ABCDEFGHIJKLMNOPQRSTUVWXYZ

Cougars – 1 or 2 color – (Not available in Arched or Vertical Arched)

ABCDEFGHIJKLMNOPQRSTUVWXYZ

Dade Bold – 1 or 2 color

ABCDEFGHIJKLMNOPQRSTUVWXYZ

FB Rush – 1 or 2 color

ABCDEFGHIJKLMNOPQRSTUVWXYZ

Glades Bold – 1 or 2 color

ABCDEFGHIJKLMNOPQRSTUVWXYZ

NUMBER FONT OPTIONS: Height will vary by sport and gender.

Full Block – 1 or 2 color

1234567890

Athletic Shadow – 2 color only

1234567890

Bureau – 1 or 2 color

1234567890

Cougars – 1 or 2 color – (Not available in Arched or Vertical Arched)

0123456789

Dade Bold – 1 or 2 color

1234567890

FB Rush – 1 or 2 color

1234567890

Glades Bold – 1 or 2 color

1234567890

Ithaca – 1 or 2 color

1234567890

Kansas – 1 or 2 color

1234567890

Michigan State – 1 or 2 color

1234567890

Ithaca – 1 or 2 color

ABCDEFGHIJKLMNOPQRSTUVWXYZ

Kansas – 1 or 2 color

ABCDEFGHIJKLMNOPQRSTUVWXYZ

Michigan State – 1 or 2 color

ABCDEFGHIJKLMNOPQRSTUVWXYZ

Tuscon Bold – 1 or 2 color – (Also available in Condensed version)

ABCDEFGHIJKLMNOPQRSTUVWXYZ

Boulder Bold – 1 or 2 color

ABCDEFGHIJKLMNOPQRSTUVWXYZ

Script – 1 or 2 color

ABCDEFGHIJKLMNOPQRSTUVWXYZ

Script Lower Case – 1 or 2 color

abcdefghijklmnopqrstuvwxyz

Tuscon Bold – 1 or 2 color

1234567890

Morgantown – 1 or 2 color

1234567890

Boulder Bold – 3 color only

1234567890

Blacksburg – 3 color only

1234567890

Gridiron – 3 color only

1234567890

Post embellishment is not recommended with digitally printed styles.

FULL-BUTTON JERSEY

See below*



SIZES: S, M, L, XL, 2XL, 3XL

OFFER DATE: 12/01/13
END DATE: 04/01/16

Full-button jersey with lightweight, Dri-FIT polyester warp knit body fabric for moisture-wicking durability. Mesh side and shoulder inset panels for increased breathability and less bulk at waist when tucked-in. Body width: 22", Body length: 32.5" (size large).

FABRIC: 100% polyester.

578472	Blank	\$65.00*
269941	One-Color Standard Twill Name/Number Split Front	\$115.00*
269942	Two-Color Standard Twill Name/Number Split Front	\$135.00*
436077	One-Color Lightweight Twill Split Front	\$125.00*
436078	Two-Color Lightweight Twill Split Front	\$145.00*
269945	Arm Cuff - Braid/Piping	\$10.00*
269946	Neck/Placket - Braid/Piping	\$30.00*

NEW DRI-FIT



LIGHTS OUT PANT II

See below*



SIZES: S, M, L, XL, 2XL, 3XL, 4XL, MT, LT, XLT,3XLT, 4XLT

OFFER DATE: 12/01/13
END DATE: 04/01/16

Moisture-wicking Dri-FIT polyester warp knit baseball pant with reinforced knees for durability, brass zipper, two metal snap closures, two back welt pockets, and a pro-style seven belt loop system. Gripper silicone print on interior waistband for jersey lock-down with jacquard "NIKE BASEBALL" graphic repeat. Hip width: 22", Inseam length: 31.75" (size large). Tall inseam length: +2.375" (all sizes).

FABRIC: 100% polyester.

578478	Blank	\$65.00*
269947	Braid/Piping	\$14.00*

NEW DRI-FIT



BP JERSEY II

See below*



SIZES: S, M, L, XL, 2XL, 3XL

OFFER DATE: 12/01/13
END DATE: 04/01/16

Lightweight mesh two-button BP top with mesh at arm seams for breathability. Mock raglan sleeve construction for ease of movement. Body width: 22", Body length: 32.75" (size large).
FABRIC: 100% polyester.

578550	Blank	\$60.00*
330089	One-Color Standard Twill	\$100.00*
330090	Two-Color Standard Twill	\$90.00*
409637	One-Color Lightweight Twill	\$100.00*
409638	Two-Color Lightweight Twill	\$110.00*
456047	Sublimated Lightweight Twill	\$110.00*

NEW DRI-FIT



Style 578478
LIGHTS OUT PANT II

519552 | ELITE VAPOR PANT OPEN

\$80.00*



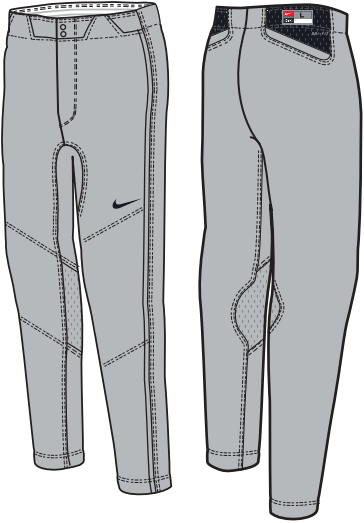
SIZES: S, M, L, XL, 2XL
*15% upcharge for 3XL

OFFER DATE: 12/01/12
END DATE: 04/01/15

Dri-FIT polyester warp knit body fabric for durable breathability, with stretch fabric in gusset for mobility. Lined knees for durability. Articulated back pockets for accessibility. Side seams moved forward to aid in sliding. Hip width: 21.5", Inseam length: 31.75" (size large), with +2" or +4" inseam options.

FABRIC: Body: 100% polyester. Gusset: 85% polyester/15% spandex.

DRI-FIT 



519553 | ELITE VAPOR PANT UNHEMMED

\$80.00*



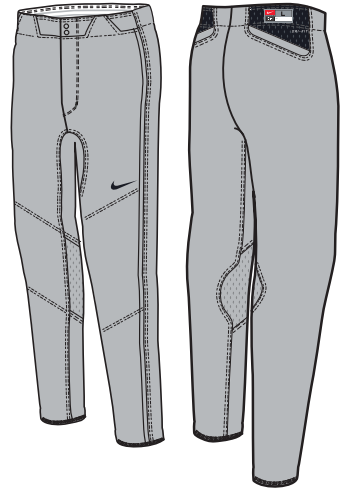
SIZES: S, M, L, XL, 2XL
*15% upcharge for 3XL

OFFER DATE: 12/01/12
END DATE: 04/01/15

Dri-FIT polyester warp knit body fabric for durable breathability, with stretch fabric in gusset for mobility. Lined knees for durability. Articulated back pockets for accessibility. Side seams moved forward to aid in sliding. Hip width: 21.5" (size large), Inseam length: 37" (all sizes).

FABRIC: Body: 100% polyester. Gusset: 85% polyester/15% spandex.

DRI-FIT 



519554 ELITE VAPOR PANT HIGH

\$75.00*

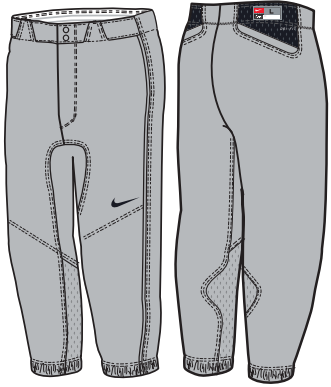


SIZES: S, M, L, XL, 2XL
*15% upcharge for 3XL

OFFER DATE: 12/01/12
END DATE: 04/01/15

Dri-FIT polyester warp knit body fabric for durable breathability, with stretch fabric in gusset for mobility. Lined knees for durability. Articulated back pockets for accessibility. Side seams moved forward to aid in sliding. Hip width: 21.5", Inseam length: 16.25" (size large), with +2" or +4" inseam options.

FABRIC: Body: 100% polyester. Gusset: 85% polyester/15% spandex.



453356 HYPERCOOL ELITE PANT

\$60.00

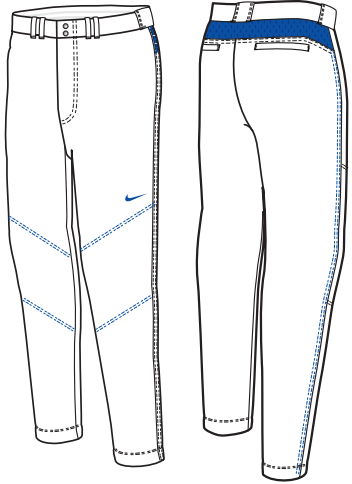


SIZES: S, M, L, XL, 2XL
*15% upcharge for 3XL

OFFER DATE: 12/01/11
END DATE: 04/01/14

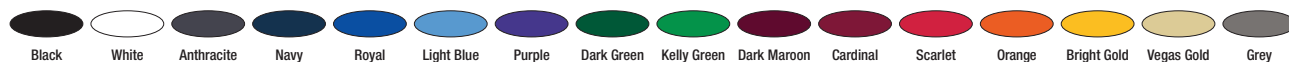
Poly warp knit baseball pant. Flat-back mesh design on upper back yoke. Reinforced knees for durability, brass zipper, two metal snap closures, two back welt pockets and a seven belt loop system. Contrast stitch matches back inset. Gripper elastic waistband and open bottom hem. Swoosh design trademark at front left leg. Hip width: 21.25", Inseam length: 31.75" (size large) with +2" or +4" inseam options.

FABRIC: 100% polyester.



CUSTOM UNIFORM OPTIONS

COLOR OPTIONS



PANT COLOR OPTIONS



EMBELLISHMENT COLOR OPTIONS *Sublimated Lightweight Stretch Twill and Embroidery only.



LETTER FONT OPTIONS: Height will vary based on team name.

Full Block – 1 or 2 color – (Also available in Condensed version)

ABCDEFGHIJKLMNOPQRSTUVWXYZ

Athletic Shadow – 2 color only

ABCDEFGHIJKLMNOPQRSTUVWXYZ

Bureau – 1 or 2 color

ABCDEFGHIJKLMNOPQRSTUVWXYZ

Cougars – 1 or 2 color – (Not available in Arched or Vertical Arched)

ABCDEFGHIJKLMNOPQRSTUVWXYZ

Dade Bold – 1 or 2 color

ABCDEFGHIJKLMNOPQRSTUVWXYZ

FB Rush – 1 or 2 color

ABCDEFGHIJKLMNOPQRSTUVWXYZ

Glades Bold – 1 or 2 color

ABCDEFGHIJKLMNOPQRSTUVWXYZ

NUMBER FONT OPTIONS: Height will vary by sport and gender.

Full Block – 1 or 2 color

1234567890

Athletic Shadow – 2 color only

1234567890

Bureau – 1 or 2 color

1234567890

Cougars – 1 or 2 color – (Not available in Arched or Vertical Arched)

0123456789

Dade Bold – 1 or 2 color

1234567890

FB Rush – 1 or 2 color

1234567890

Glades Bold – 1 or 2 color

1234567890

Ithaca – 1 or 2 color

1234567890

Kansas – 1 or 2 color

1234567890

Michigan State – 1 or 2 color

1234567890

Ithaca – 1 or 2 color

ABCDEFGHIJKLMNOPQRSTUVWXYZ

Kansas – 1 or 2 color

ABCDEFGHIJKLMNOPQRSTUVWXYZ

Michigan State – 1 or 2 color

ABCDEFGHIJKLMNOPQRSTUVWXYZ

Tuscon Bold – 1 or 2 color – (Also available in Condensed version)

ABCDEFGHIJKLMNOPQRSTUVWXYZ

Boulder Bold – 1 or 2 color

ABCDEFGHIJKLMNOPQRSTUVWXYZ

Script – 1 or 2 color

ABCDEFGHIJKLMNOPQRSTUVWXYZ

Script Lower Case – 1 or 2 color

abcdefghijklmnopqrstuvwxyz

Tuscon Bold – 1 or 2 color

1234567890

Morgantown – 1 or 2 color

1234567890

Boulder Bold – 3 color only

1234567890

Blacksburg – 3 color only

1234567890

Gridiron – 3 color only

1234567890

EMBELLISHMENT OPTIONS

- One-Color Screen Print — \$30
- Two-Color Screen Print — \$40
- One-Color Standard Twill — \$50
- Two-Color Standard Twill — \$70
- One-Color Lightweight Stretch Twill — \$60
- Two-Color Lightweight Stretch Twill — \$80
- Sublimated Lightweight Stretch Twill — \$50

ELITE FULL-BUTTON JERSEY

SIZES: S, M, L, XL, 2XL
 *25% upcharge for 3XL

Full-button front jersey with cover-stitched seams and curved Raglan sleeves.

JERSEY OPTIONS:

- Solid colors or pinstripes
- 1/8" button front braid
- 1/2" button front braid placed like piping
- 1/2" braid set-up from sleeve end
- 1/8" piping set-up from sleeve end
- 1" sleeve end trim
- 1/8" piping set below raglan sleeve seam
- 1/2" braid set-on neckline
- Name plaques
- +2" or +4" extra length
- *Pictured with optional piping*

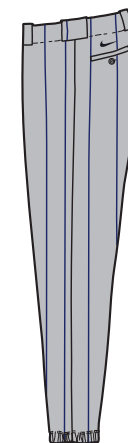
NLGM01640 Solid colors - Poly warp knit

NLGM03121 White with pinstripes

NLGM03120 Grey with pinstripes

NLGM04450 Nylon pro mesh with raglan sleeves

NLGM01636 Nylon pro mesh with set-in sleeves



ELITE CONVENTIONAL PANT

SIZES: S, M, L, XL, 2XL
 *25% upcharge for 3XL

Non-roll elastic waistband with belt loops, two-ply knees, two back set in pockets, left side with button closure and cover-stitched seams.

PANT OPTIONS:

- Solid colors or pinstripes
- 1/8" side piping (not available on pinstripe)
- 1/2" side braid
- 1" side braid
- 1 1/2" side braid
- Braves-style belt loop braid
- +2", +4" or +6" extra length (extra length limitations on nylon pinstripe)
- *Pictured with optional piping*

NPKN01648 Solid colors - Poly warp knit

NPKN03111 White with pinstripes

NPKN03110 Grey with pinstripes

NPKN03104 Heavyweight nylon stretch fit



BASEBALL CUSTOM ELITE UNIFORM OPTIONS



COLORS AND FABRICS

FABRICS	White	Black	Navy	Purple	Royal	Light Blue	Silver	Dark Green	Kelly Green	Dark Maroon	Cardinal	Scarlet	Orange	Bright Gold	Vegas Gold	Grey	Blue Grey	Pinkfire II
100% stretch fit nylon - Medium/Heavy																		
100% stretch fit nylon - Heavy																		
100% stretch fit nylon white w/ pinstripes - Medium																		
100% stretch fit nylon grey w/ pinstripes - Medium																		
100% polyester warp knit (top weight)																		
100% polyester warp knit (bottom weight)																		
100% nylon pro mesh																		
100% nylon Dri-FIT Flat-back mesh																		
Shimmersheen																		
Pro-Brite mesh																		

MEN'S CUSTOM ELITE UNIFORM SIZING FOR CARRY OVER STYLES*

*For new styles please refer to sizing chart in information section of the catalog.

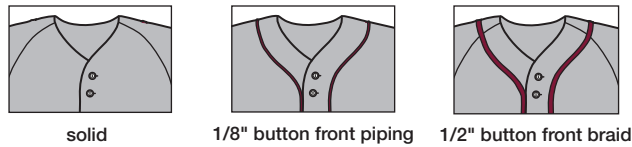
SIZE	CHEST	WAIST	INSEAM
Small	34-36	26-28	27
Medium	38-40	30-32	29
Large	42-44	34-36	29
XL	46-48	38-40	29
2XL	50-52	42-44	29

TRIM OPTIONS

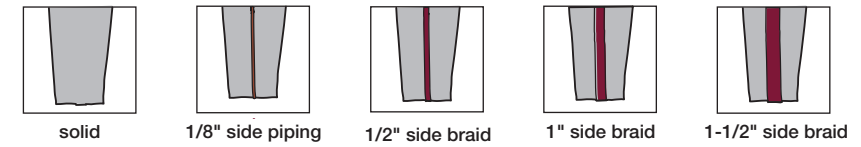
NECK/CUFF/PANT TRIM OPTIONS* *1/8" braid piping available in solid colors.*1/2" braid available on 11, 22, 23E and 33E patterns only.



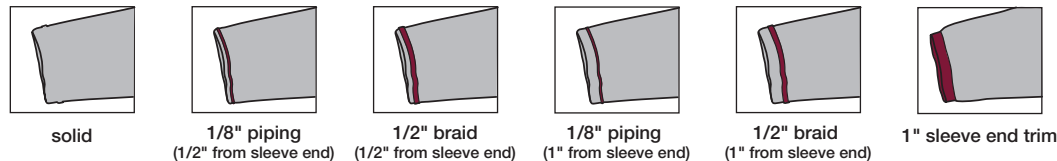
FULL BUTTON JERSEY OR VEST FRONT TRIM OPTIONS



BASEBALL PANT TRIM OPTIONS



FULL BUTTON JERSEY SLEEVE TRIM OPTIONS



FONTS

- Tackle twill and print
- Script lettering - 5" caps with 3" lower case / 4" caps with 2"
- Name plates and names are offered depending on style

Wildcats

SCRIPT 1

(1 or 2 color print or tackle twill,
1 color tail \$6, 2 color tail \$10)

ARIZONA

PADRES STYLE

(2 color print or tackle twill)

PLAIN BLOCK (1 or 2 color print or tackle twill - 3"/4")

A B C D E F G H I J K L M N O P Q R S T U V W X Y Z

FULL BLOCK (1 or 2 color print or tackle twill - 3"/4")

A B C D E F G H I J K L M N O P Q R S T U V W X Y Z

ATHLETIC SHADOW (2 color print or tackle twill - 3"/4")

A B C D E F G H I J K L M N O P Q R S T U V W X Y Z

GOTHIC BLOCK (1 or 2 color print or tackle twill - 3"/4")

A B C D E F G H I J K L M N O P Q R S T U V W X Y Z

ATHLETIC GOTHIC SHADOW (1 or 2 color print or tackle twill - 3"/4")

A B C D E F G H I J K L M N O P Q R S T U V W X Y Z

KANSAS BLOCK (1 or 2 color print or tackle twill - 3"/4")

A B C D E F G H I J K L M N O P Q R S T U V W X Y Z

CAXTON ROMAN BOOK (1 or 2 color print or tackle twill - 3"/4")

A B C D E F G H I J K L M N O P Q R S T U V W X Y Z

SYRACUSE BLOCK (1 or 2 color print or tackle twill - 3"/4")

A B C D E F G H I J K L M N O P Q R S T U V W X Y Z

TRUE BLOCK - 1 or 2 color tackle twill)

A B C D E F G H I J K L M N O P Q R S T U V W X Y Z

MIAMI - 1 or 2 color tackle twill)

A B C D E F G H I J K L M N O P Q R S T U V W X Y Z

ATHLETIC GOTHIC SHADOW (2 color print or tackle twill - 4"/6"/8")

1 2 3 4 5 6 7 8 9 0

ATHLETIC SHADOW (2 color only print or tackle twill - 4"/5"/6"/8"/10"/12")

1 2 3 4 5 6 7 8 9 0

KANSAS BLOCK (1 or 2 color print or tackle twill - 4"/6"/8")

1 2 3 4 5 6 7 8 9 0

SYRACUSE BLOCK (tackle twill - 3"/4"/6"/8")

1 2 3 4 5 6 7 8 9 0

GOTHIC (1 or 2 color print - 4"/6"/8"/10"/12", tackle twill only - 4"/6"/8"/10")

1 2 3 4 5 6 7 8 9 0

FULL BLOCK (1 or 2 color print or tackle twill - 8"/10"/12")

1 2 3 4 5 6 7 8 9 0

CAXTON ROMAN BOOK (1 or 2 color print or tackle twill - 4"/5"/6"/8")

1 2 3 4 5 6 7 8 9 0

TRUE BLOCK - 1 or 2 color tackle twill)

0 1 2 3 4 5 6 7 8 9

MIAMI - 1 or 2 color tackle twill)

0 1 2 3 4 5 6 7 8 9



538553 | NIKE ZOOM VAPOR ELITE BB METAL \$120.00

SIZES: 8-14 OFFER DATE: C/O

Zoom Vapor Elite BB Metal is ideal if you're a serious baseball player who's looking for a cleat with lightweight speed, traction and comfort.

UPPER: Hyperfuse construction is lightweight, breathable and durable.

MIDSOLE: Nike Zoom unit for low-profile, lightweight and responsive cushioning.

OUTSOLE: Pebax® speed plate for excellent traction and durability.

010 Black/White



524957 | NIKE AIR MAX MVP ELITE 3/4 METAL \$110.00

SIZES: 8-15, 16 OFFER DATE: C/O

The ultimate blend of lightweight performance and support in a premium package.

UPPER: Mid-cut Flywire technology provides zonal support and breathability in an ultra-light, ultra-strong package.

MIDSOLE: Full-length Phylon midsole with forefoot Nike Zoom unit and large-volume Max Air unit in the heel provides maximum comfort and responsiveness.

OUTSOLE: High-end metal outsole provides maximum comfort and traction.

010 Black/White



599235 | HUARACHE PRO MID METAL \$95.00

SIZES: 8-14, 15, 16 OFFER DATE: 10/1

UPPER: Premium synthetic leather and mesh combine with an ankle strap for a form fit and ankle support. TPU heel counter for superior heel fit and shape.

MIDSOLE: New full-length Phylon midsole with full-length encapsulated Air-Sole unit for a comfortable, responsive ride. Toe guard for durability.

OUTSOLE: Full-length Pebax for a lightweight strength and return of energy. High-end molded outsole provides maximum comfort and traction.

001 Black/White

014 Black/White-Deep Royal

016 Black/White-Varsity Red

101 White/Black



599233 | HUARACHE PRO LOW METAL \$90.00

SIZES: 8-14, 15, 16 OFFER DATE: 10/1

UPPER: Premium synthetic leather and mesh combine for a form fit and support. TPU heel counter for superior heel fit and shape.

MIDSOLE: New full-length Phylon midsole with full-length encapsulated Air-Sole unit for a comfortable, responsive ride. Toe guard for durability.

OUTSOLE: Full-length Pebax for a lightweight strength and return of energy. High-end molded outsole provides maximum comfort and traction.

001 Black/White

014 Black/White-Deep Royal

016 Black/White-Varsity Red

101 White/Black



524641 | NIKE AIR MVP PRO METAL \$80.00

SIZES: 4-14, 15, 16 OFFER DATE: C/O

UPPER: Premium synthetic leather upper with integrated dynamic fit-sleeve provide a lightweight, crafted fit.

MIDSOLE: Full-length midsole with heel Air-Sole unit for a smooth, fast ride. Framelite medial toe guard for enhanced durability.

OUTSOLE: Nine-cleat traction for maximum comfort and traction. Features full-length Pebax® for lightweight strength and return of energy.

010 Black/White

100 White/Black-Black

410 Deep Royal/White

610 Varsity Red/White



524640 | NIKE LUNAR MVP PREGAME \$80.00

SIZES: 8-15, 16, 17, 18, 19 OFFER DATE: C/O

The ultimate baseball trainer for pre-game, post-game and everything in between.

UPPER: Lightweight synthetic leather and mesh upper provides great performance fit and excellent breathability.

MIDSOLE: Phylon midsole with full-length encapsulated Air-Sole unit and heel crash pad provide a cushioned ride. Injected shank for midfoot strength arch support.

OUTSOLE: Solid rubber outsole with hybrid traction pattern and lateral outrigger for traction and lateral stability. Toe bumper provides durability toe-drag.

001 Black/Metallic Silver-White

014 Black/White-Deep Royal (Mesh)

016 Black/White-Varsity Red (Mesh)

101 White/Black-White




333785 | AIR DIAMOND TRAINER \$60.00
SIZES: 4-14, 15, 16 **OFFER DATE:** C/O

A classic baseball trainer designed for the needs of today's athlete.

UPPER: Lightweight synthetic leather combination with removable tongue flap.

MIDSOLE: Full-length Phylon midsole with Air-Sole unit in heel.

OUTSOLE: Rubber outsole combines our nubby bottom outsole with cross-training traction to meet the on-field needs of MLB players.

012 Black/White-Metallic Silver

Available in Wide:334096-012 Black/White


SX4810 | 2PPK BASEBALL SOCK \$16.00
SIZES: S, M, L, XL **OFFER DATE:** 10/1

Dri-FIT fabric / Wicks away moisture to help keep feet dry and cool • Arch support / Snug, secure fit • Compression knit / Supportive fit for game-day comfort • Reinforced heel and toe / Enhanced durability in high-wear areas

FABRIC: ???.

005	Black/(Dark Grey)	120	White/(Neutral Grey)
414	College Navy/(College Navy)	440	Game Royal/(Game Royal)
656	University Red/(University Red)		

NEW DRI-FIT


GB0369 | MVP ELITE PRO \$60.00
SIZES: M, L, XL, XXL **OFFER DATE:** 10/1

Advanced performance batting glove • Clean Palm Design / One single piece of textured Cabretta leather wraps the palm, up over the side of the hand, pinky and thumb. Fewer seams, no distraction • Back-of-Hand Mesh / Increased mesh gusset for extra ventilation and flexibility over key stretch zones, for better fit and comfort at the plate • Flexible Velcro / Separated Velcro units replace the long single piece, for improved flexibility and lightweight comfort around the wrist • Thumb Flex / Improved thumb flex zone designed to eliminate bunching, with more stretch for a clean, secure grip around the handle

120 White/Bone/Anthracite/(Chrome)

NEW


GB0335 | DIAMOND ELITE PRO II \$45.00
SIZES: S, M, L, XL **OFFER DATE:** C/O

Advanced performance batting glove • Seamless Spyder-Tex cabretta leather from Pittards offers superior grip and feel • The leather wraps up and around the side of the pinky, thumb and index finger, moving seams away for a clean connection • Stretch gusset over the thumb lets the hand fully wrap around the bat comfortably • Pre-curved fingers match shape of hand • Wide, secure spandex wrist strap • NikeFIT dry moisture-wicking fabric on back-of-hand and between fingers helps keep you dry and comfortable

001	Black/Black/Black/(White)	002	Black/White/Black/(Black)
102	White/White/White/(Black)	301	Gorge Green/White/Gorge Green/(White)
401	College Navy/White/College Navy/(White)	402	Game Royal/White/Game Royal/(White)
501	Court Purple/White/Court Purple/(White)	601	University Red/White/University Red/(White)
602	Team Maroon/White/Team Maroon/(White)	801	Team Orange/White/Team Orange/(White)


GB0370 | MVP SELECT \$35.00
SIZES: S, M, L, XL **OFFER DATE:** 10/1

Advanced performance batting glove • Clean Palm Design / One single piece of textured Cabretta leather wraps the palm, up over the side of the hand, pinky and thumb. Fewer seams, no distraction • Back-of-Hand Mesh / Increased mesh gusset for extra ventilation and flexibility over key stretch zones, for better fit and comfort at the plate • Flexible Velcro / Separated Velcro units replace the long single piece, for improved flexibility and lightweight comfort around the wrist • Thumb Flex / Improved thumb flex zone designed to eliminate bunching, with more stretch for a clean, secure grip around the handle

010 Pewter Grey/Black/Black/(White)

NEW



BA4757 MVP ELITE \$125.00

SIZES: MISC **OFFER DATE:** 10/1
 Tough 600D polyester • Dual-zippered main compartment • Adjustable shoulder strap • Interior mesh pocket • Water-resistant coated bottom • Quiet, easy-roll wheels • Separate bat compartment holds up to 6 bats

087 Black/Anthracite/(Volt)

NEW



BA4758 MVP SELECT \$50.00

SIZES: MISC **OFFER DATE:** 10/1
 Tough 600D polyester • Dual-zippered main compartment • Separated shoe storage • Easy-access zip pocket • Convenient haul loop • Adjustable shoulder strap • Water-resistant coated bottom • Screened Swoosh branding • Sparate bat compartment holds up to 3 bats

011 Black/White/(White)

NEW



BA4756 MVP EDGE \$30.00

SIZES: MISC **OFFER DATE:** 10/1
 Tough 600D polyester • Dual-zippered main compartment • Easy-access zip pocket • Water-resistant coated bottom • Screened Swoosh branding • Sparate bat compartment holds up to 3 bats

011 Black/White/(White)

NEW



BA4765 VAPOR ELITE BACKPACK \$75.00

SIZES: MISC **OFFER DATE:** 10/1
 Tough 600D polyester • Dual-zippered main compartment • Separated shoe storage • Easy-access zip pocket • Convenient haul loop • Adjustable shoulder strap • Water bottle pocket • Cushioned back panel • Interior mesh pocket • Dual side pockets • 100% recycled material • Water-resistant coated bottom • Screened Swoosh branding • Separate bat compartment holds one bat each • Separate helmet compartment

011 Black/Anthracite/(Volt)

NEW



BA4766 VAPOR SELECT BACKPACK \$50.00

SIZES: MISC **OFFER DATE:** 10/1
 Tough 600D polyester • Dual-zippered main compartment • Adjustable padded shoulder strap • Cushioned back panel • Interior mesh pocket • Dual side pockets • Convenient haul loop • Water-resistant coated bottom • Screened Swoosh branding • Separate bat compartment holds one bat each • Separate helmet compartment

071 Black/Black/(Volt)

447 College Navy/Black/(Volt)

471 Game Royal/Black/(Volt)

657 University Red/Black/(Volt)

NEW

ENGINEERED TO THE EXACT SPECIFICATIONS OF CHAMPIONSHIP ATHLETES



NIKETEAM.COM

